





**What Do I Eat?**

twinkl

# Aim

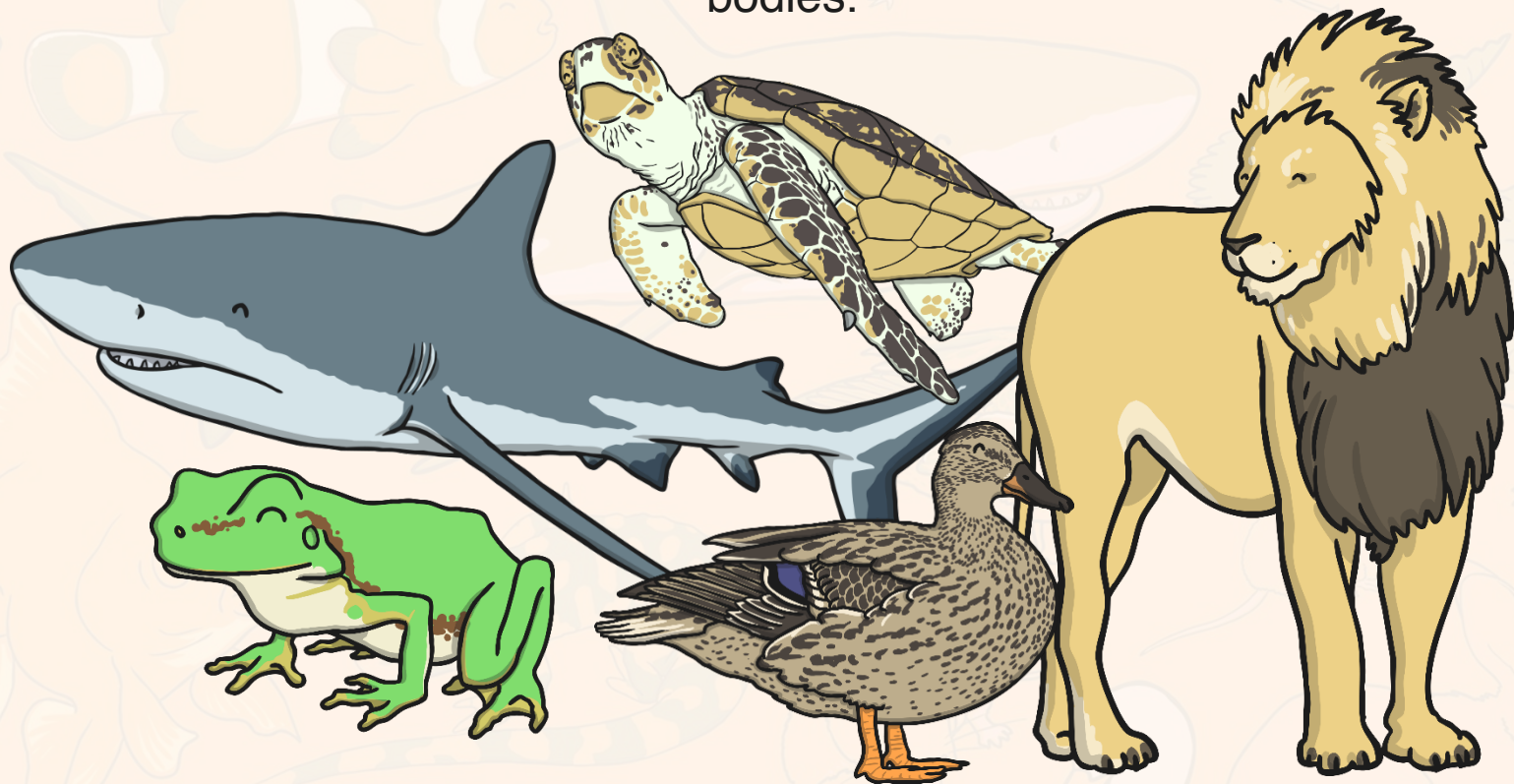
- I can name some animals that are carnivores, herbivores and omnivores.
- I can sort animals into carnivores, herbivores and omnivores.

# Success Criteria

- I know what is meant by carnivore, herbivore and omnivore.
- I can tell you some animals that are carnivores, herbivores and omnivores.
- I can say if an animals diet is carnivore, herbivore, or omnivore.
- I can sort animals into groups.



We have been learning about different kinds of animals and their bodies.



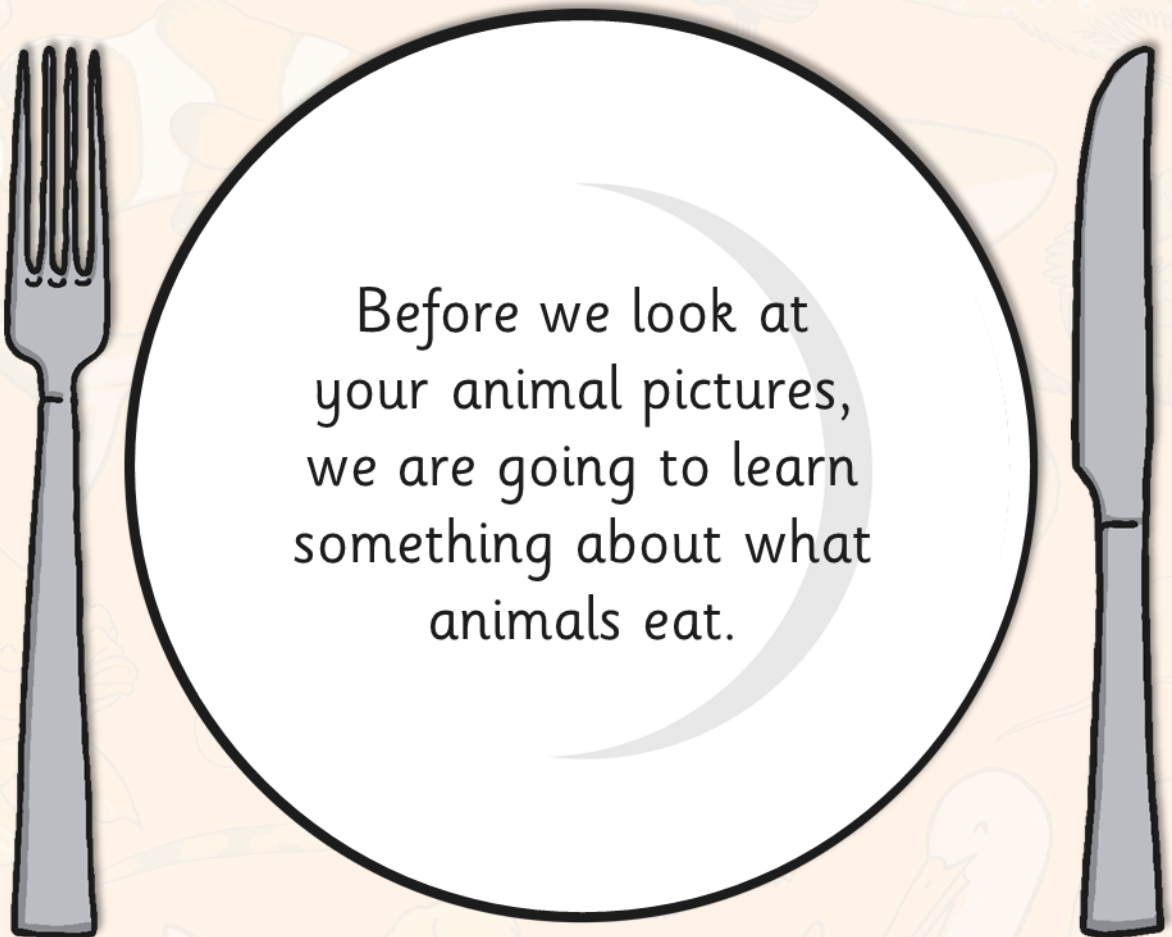
Today we are going to learn about what animals like to eat!



Can you draw a picture of an animal and the thing that it likes to eat?  
It could be a pet or a wild animal.



.....



Before we look at  
your animal pictures,  
we are going to learn  
something about what  
animals eat.

# Carnivores

Are animals that only eat meat.

These animals have to catch animals to eat.

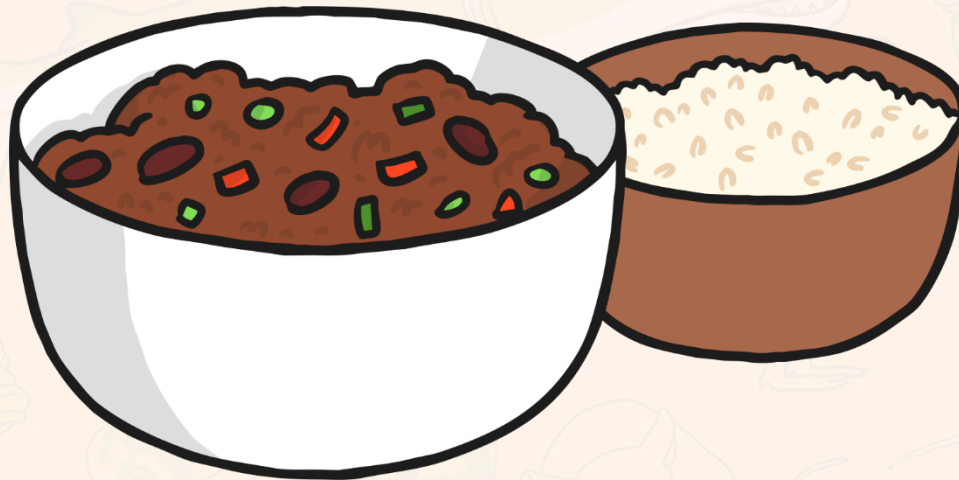


“What do I like to eat?”



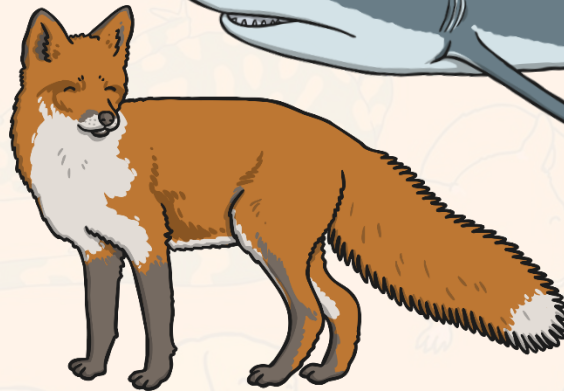
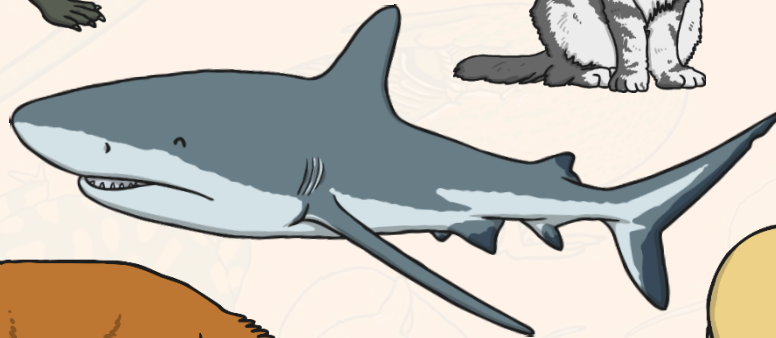
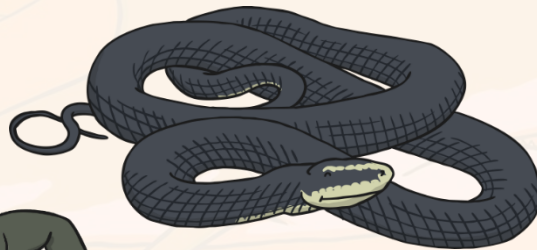
You could remember the word

**Carnivore**



By thinking of chilli con **carne**, which is a kind of dinner made with meat.

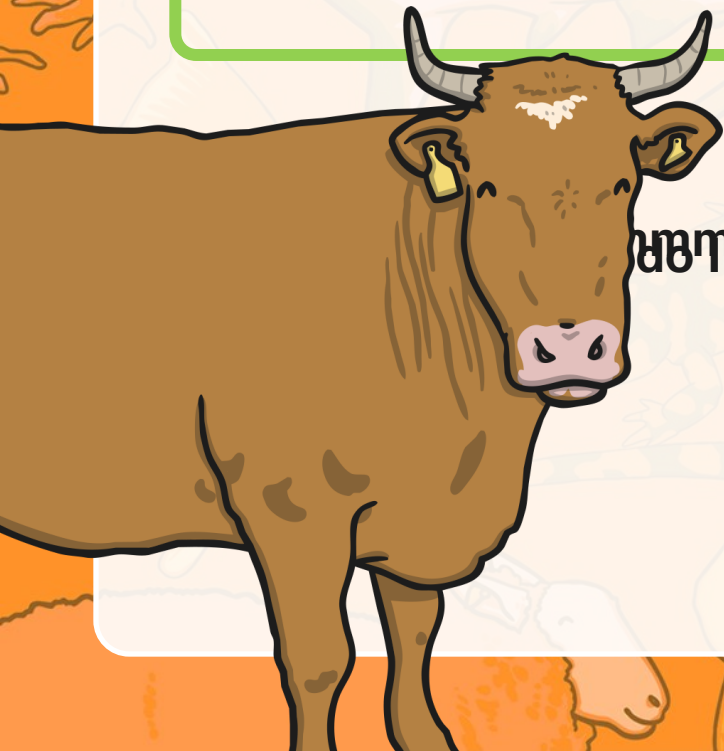
These animals are **carnivores**.



# Herbivores

Are animals that only eat plants.

These can be flowers, fruit, nuts, grass or even wood.



What do you like to eat?"



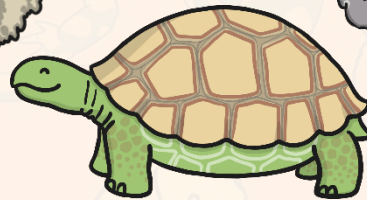
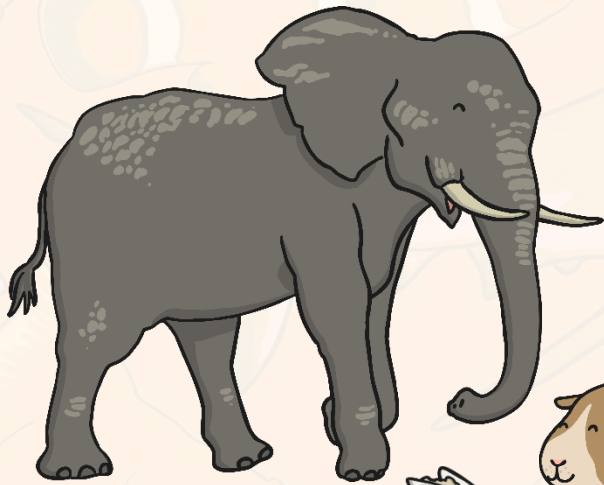
You could remember the word

**Herbivore**



By remembering that **herbs** are types of **plants**.

These animals are **herbivores**.



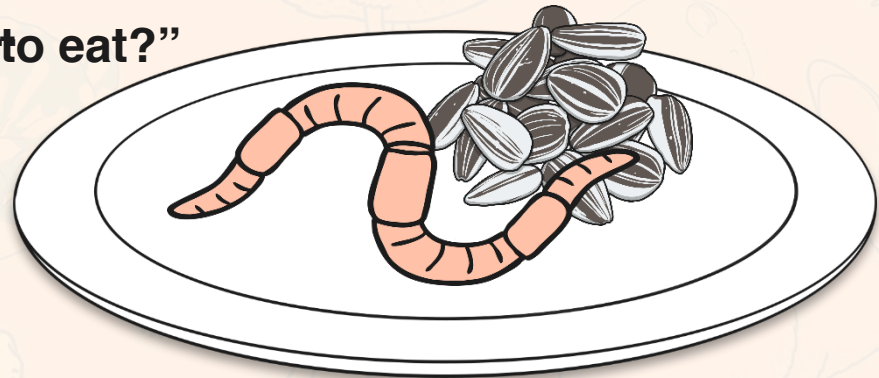
# Omni**v**ores

Are animals that eat meat and plants.

For example, a chicken can eat both worms and seeds.



"What do I like to eat?"



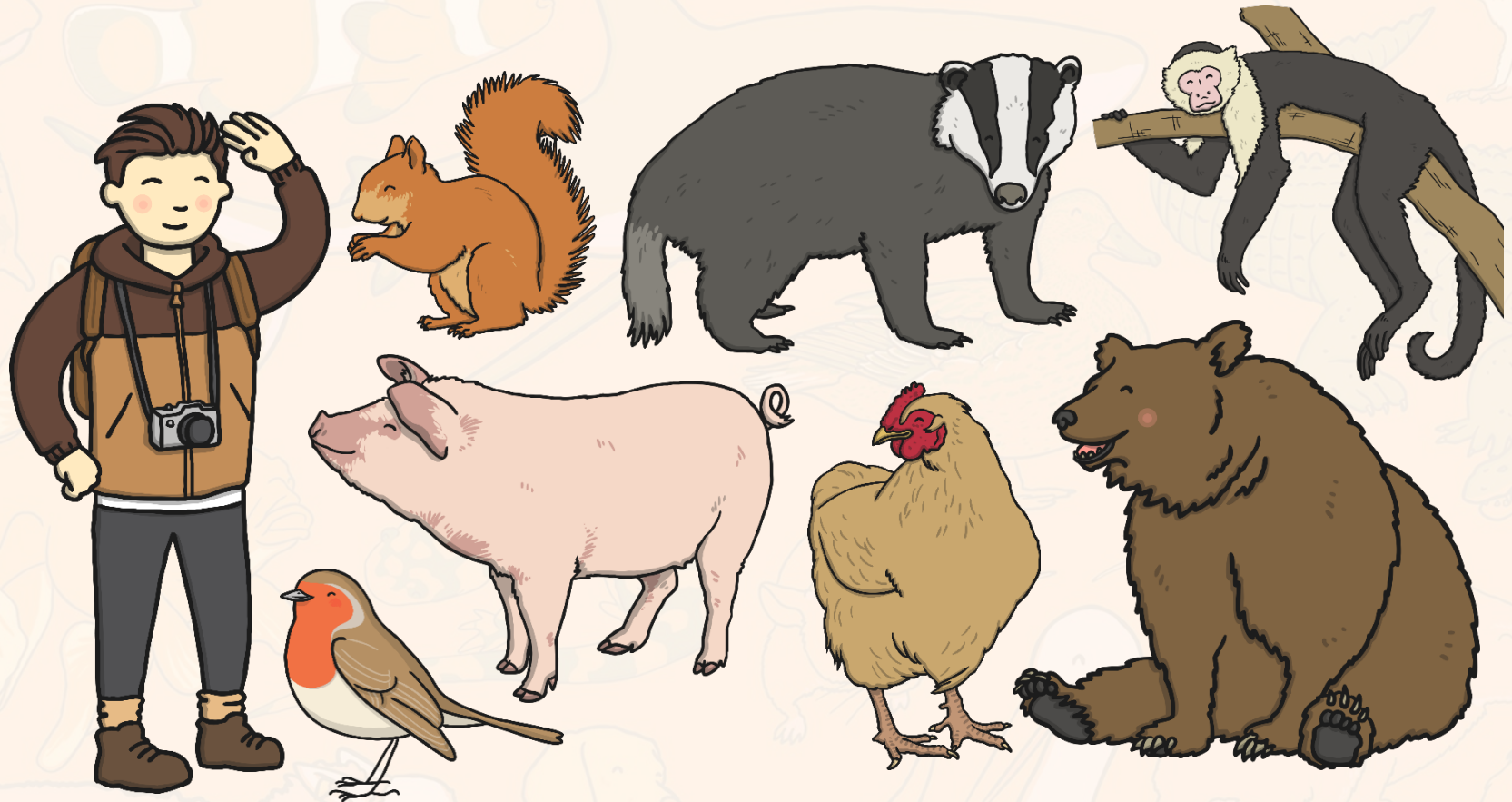
You could remember the word

**Omnivore**

By remembering that omnivores eat everything with an

Om  nom nom!

These animals are **omnivores**.





Have a look at the animal you have drawn and the thing it likes to eat.

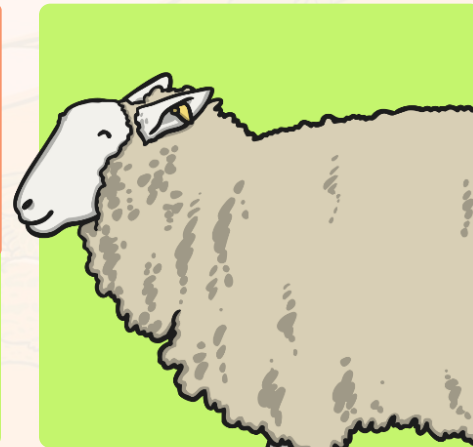
**Is your animal...**



**a carnivore?**



**an omnivore?**

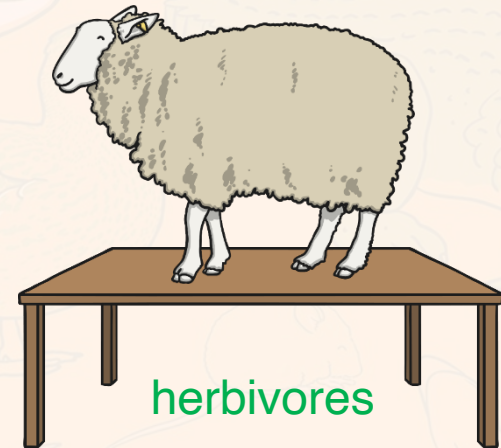
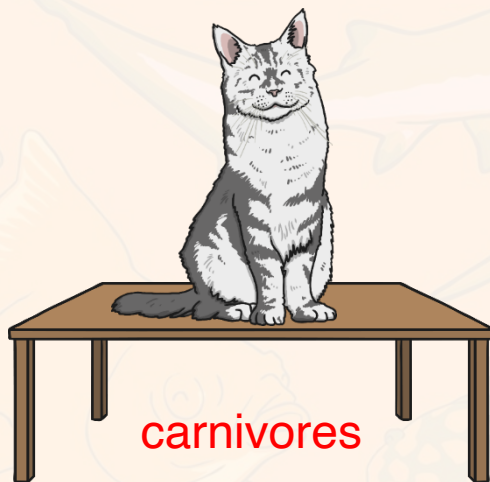


**a herbivore?**

Talk to the person sitting next to you and see if you can decide.



In the class there is a carnivore table, a herbivore table and an omnivore table. We are going to sort our animals into groups.



Talk to your partner about which table your drawing should go on.  
Put your drawing on the right table.



Now we have sorted the animals into groups! One group for carnivores, One group for herbivores, and one group for omnivores.



Lets have a look at the groups and see if all the animals are in the right place.



## Wildlife

Year 2 Science



- Working in a group, read the information on the animal cards about what each animal likes to eat.
- Decide if each animal is a **carnivore**, a **herbivore**, or an **omnivore**.
- Sort each card into the right group.

## Remember!



**Carnivores**

eat only meat



**Herbivores**

eat only plants



**Omnivores**

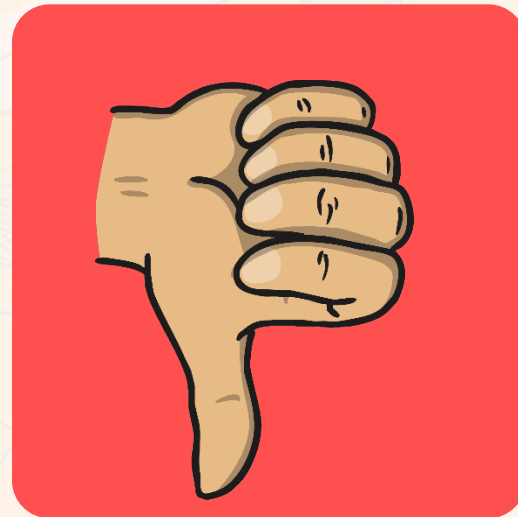
eat plants and meat



We are going to look at some animals and their food, and I will say if the animal is carnivore, a herbivore or an omnivore.



If what I say is true,  
give me a thumbs  
up.



If what I say is false,  
give me a thumbs  
down.



Tigers eat animals like moose, deer, buffalo and goats.



It is a **carnivore**.

A cartoon-style illustration of a sheep standing and facing left. The sheep has a thick, light brown woolly body with darker brown spots. Its head is white with a small, curved horn and a yellow eye. It has four white legs. The background is a light beige color with faint, stylized green leaves.



It is a **carnivore**.



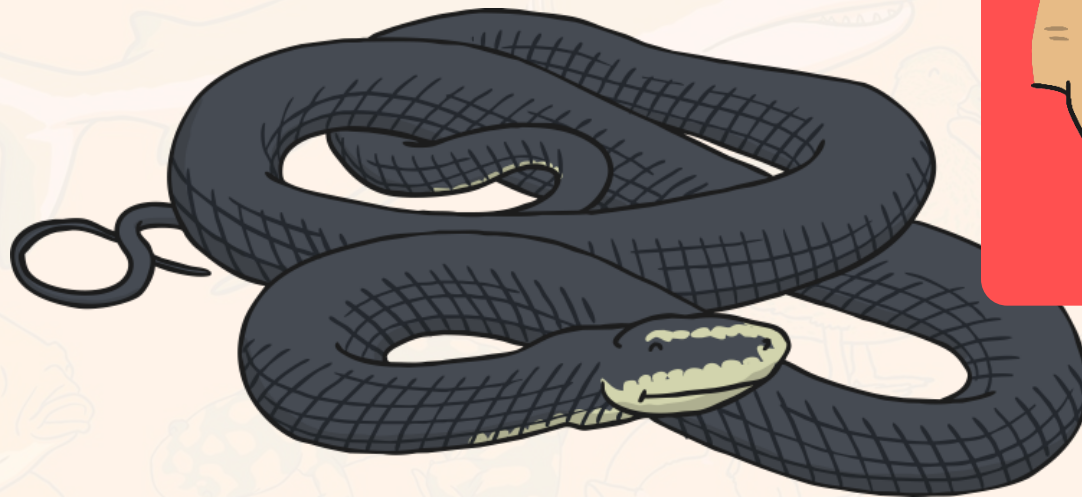
A bear eats berries, grasses, fish and other animals.



It is a **omnivore**.



A snake eats insects and small animals.



It is a **herbivore**.



A human eats fruit and vegetables, grains, dairy food and meat.



It is a **omnivore**.

# Aim



- I can name some animals that are carnivores, herbivores and omnivores.
- I can sort animals into carnivores, herbivores and omnivores.

# Success Criteria

- I know what is meant by carnivore, herbivore and omnivore.
- I can tell you some animals that are carnivores, herbivores and omnivores.
- I can say if an animals diet is carnivore, herbivore, or omnivore.
- I can sort animals into groups.

